

# Comprehensive selection of transducers

## Curved array transducers



- CA2-8AD**  
Abdomen, obstetrics, gynecology, pediatric, musculoskeletal, vascular, urology
- C2-8**  
Abdomen, obstetrics, gynecology, pediatric, musculoskeletal, vascular, urology
- C2-5**  
Abdomen, obstetrics, gynecology, pediatric, musculoskeletal, vascular, urology
- CA4-10M**  
Pediatric, vascular, abdomen, obstetrics, gynecology, musculoskeletal, urology

## Linear array transducers



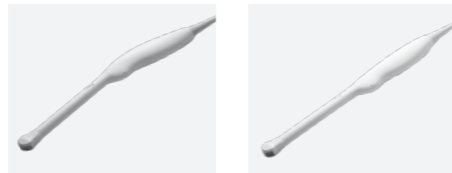
- LA3-16AD**  
Small parts, vascular, musculoskeletal, abdomen, obstetrics, gynecology, pediatric
- LN5-12**  
Small parts, vascular, musculoskeletal, abdomen, obstetrics, gynecology, pediatric
- L5-12/50**  
Small parts, vascular, musculoskeletal, abdomen, obstetrics, gynecology, pediatric
- L4-7**  
Small parts, vascular, musculoskeletal, abdomen, obstetrics, gynecology, pediatric
- LS6-15**  
Musculoskeletal, abdomen, small parts, vascular, obstetrics, gynecology, pediatric

## Volume transducers



- VN4-8**  
Abdomen, obstetrics, gynecology, musculoskeletal, pediatric, vascular, urology
- EV2-10A**  
Obstetrics, gynecology, urology

## Endo-cavity transducers



- EVN4-9**  
Obstetrics, gynecology, urology
- ER4-9**  
Obstetrics, gynecology, urology

## Phased array transducer



- PN2-4**  
Abdomen, cardiac, vascular, pediatric
- SP3-8**  
Abdomen, pediatric, cardiac, vascular

## CW transducer



- DP2B**  
Cardiac, vascular
- DP8B**  
Cardiac, vascular

1. Optional feature which may require additional purchase.  
 2. S-Detect™ for Breast and S-Detect™ for Thyroid are not available in Canada. In the United States, the Margin, Posterior Features, and Echo Pattern, the classification items of S-Detect™ for Breast are manual, thus these classification items are not automatically provided. Also the recommendations about whether results are benign or malignant in S-Detect™ are not applicable in the United States.  
 3. NerveTrack™ requires purchase after a certain period of time for a continuous usage. Please contact the sales representative for details.  
 \* This product, features, options, and transducers are not commercially available in all countries.  
 \* Due to regulatory reasons, their future availability cannot be guaranteed. Please contact your local sales representative for further details.  
 \* This product is a medical device, please read the user manual carefully before use.  
 \* Strain value for ElastoScan+™ is not applicable in Canada and the United States.

**SAMSUNG MEDISON CO., LTD.**

© 2021 Samsung Medison All Rights Reserved.  
 Samsung Medison reserves the right to modify the design, packaging, specifications, and features shown herein, without prior notice or obligation.

CT-HS40 V1.04-GH-IMC-210115-EN

CE0123

# Establish everyday efficiency

Ultrasound system

**HS40** Powered by CrystalLive™



Scan code or visit  
[www.samsunghealthcare.com](http://www.samsunghealthcare.com)  
 to learn more



**Relentless Innovation**  
 for your diagnostic confidence

**SAMSUNG**



# Powered by CrystalLive™

CrystalLive™ is Samsung's up-to-date ultrasound imaging engine with enhanced 2D image processing, 3D rendering and color signal processing, to offer outstanding image performance and efficient workflow during complex cases.

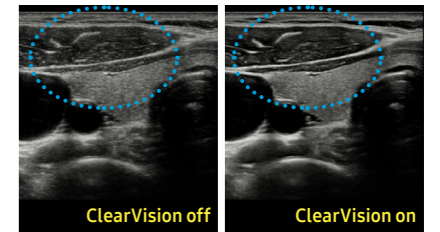


## Extraordinary image quality for a clearer view

With the astonishingly clear view provided by Samsung's advanced imaging technologies, you can make clinical decisions with greater confidence.

### Noise reduction filter to improve 2D image quality

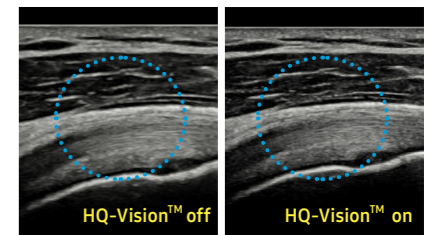
The noise reduction filter improves edge enhancement and creates sharper 2D images for optimal diagnostic performance. In addition, ClearVision provides application-specific optimization and advanced temporal resolution in live scan mode.



Thyroid

### Clarify blurred area to provide clearer images

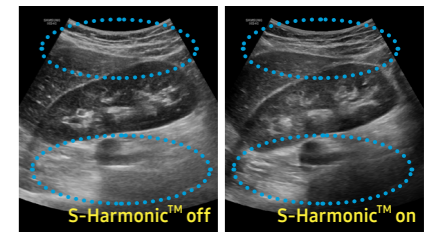
HQ-Vision™ provides clearer images by mitigating the characteristics of ultrasound images that are slightly blurred than the actual vision.



Shoulder

### Uniform imaging performance of overall image area from near-to-far

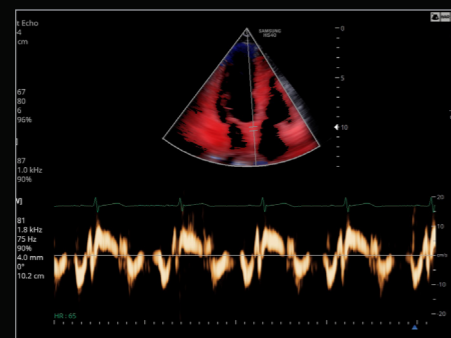
S-Harmonic™ mitigates the signal noise, enhances contrast, and provides uniform image performance of overall image area from near-to-far.



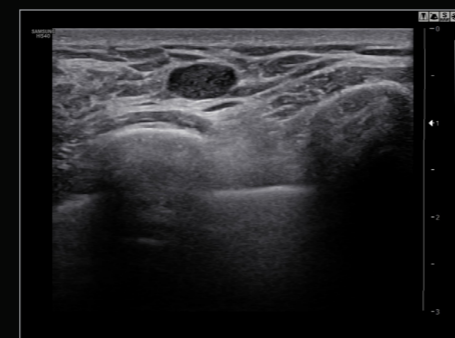
Kidney



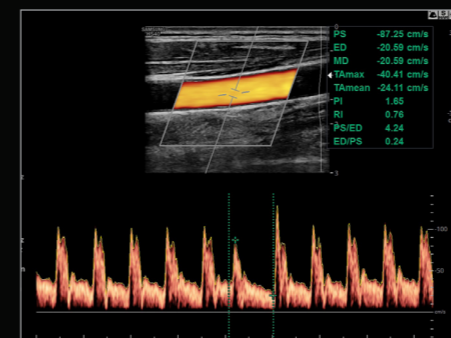
Pancreas



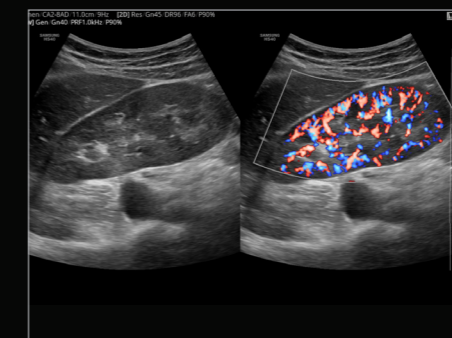
Adult echo in TDW



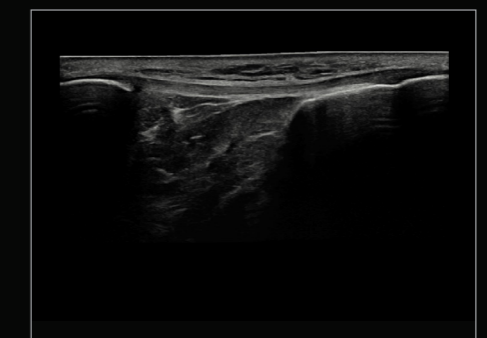
Breast



CCA in PW



Kidney in S-Flow™



Patellar tendon with Panoramic+



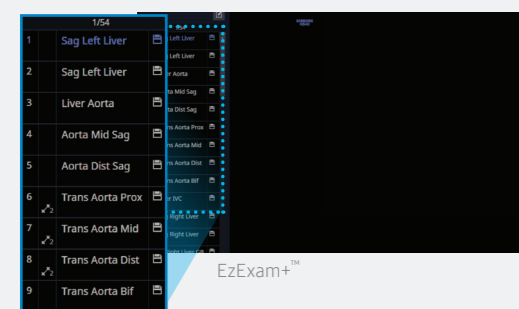
# Enhanced tools for optimized care

Samsung's advanced yet budget-friendly tools, previously exclusive to our premium ultrasound platforms, enhance vascular, cardiac, musculoskeletal, and small parts exam capabilities for efficient and effective care.



## EzExam+™<sup>1</sup>

EzExam+™ enables you to build or use a predefined protocol, and assign protocols for examinations that are regularly performed in the hospital in order to reduce the number of steps that you have to go through.



EzExam+™

## QuickPreset

With one touch, the user can select the most common transducer and preset combinations. QuickPreset maximizes efficiency to make a full day of scanning simple and easy.



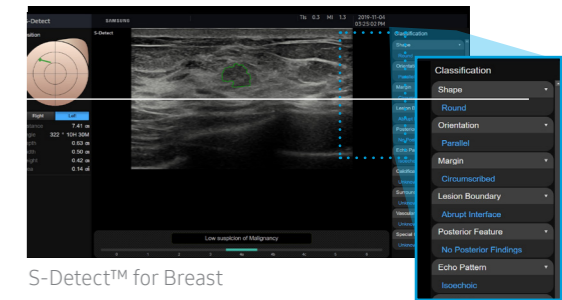
CA2-8AD

## S-Detect™ for Breast<sup>1,2</sup>

Semi-automated imaging reporting tool for breast assessment

The feature, which analyzes selected lesions in the breast ultrasound study and shows the analysis data, applies BI-RADS ATLAS\* (Breast Imaging-Reporting and Data System, Atlas) to provide standardized reporting; and helps diagnosis with the streamlined workflow.

\* It is a registered trademark of ACR and all rights reserved by ACR.

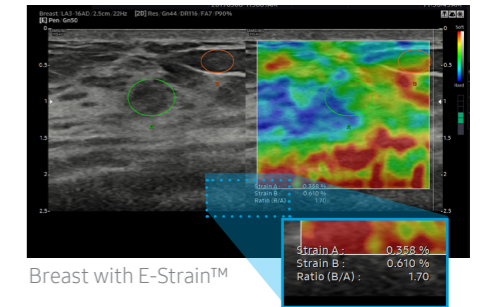


S-Detect™ for Breast

## E-Strain™<sup>1</sup>

Semi-automated imaging reporting tool for thyroid assessment

E-Strain™ is designed to enable quick and easy calculation of the strain ratio between two regions of interest for day-to-day practice. Simply by setting the two targets, you can receive accurate, consistent results and make informed decisions in many types of diagnostic procedures.

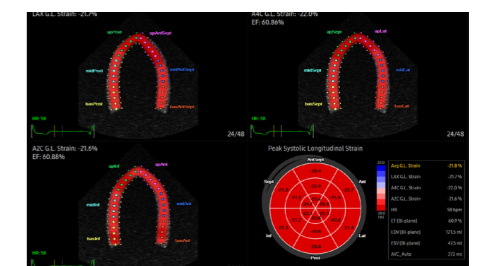


Breast with E-Strain™

## Strain+<sup>1</sup>

Quantitative tool for measuring wall motion of the left ventricle

Strain+ is a quantitative tool for global and segmental wall motion of the left ventricle (LV). In Strain+, three standard LV views and a Bull's Eye are displayed in a quad screen for easy and quick assessment of the LV-function.

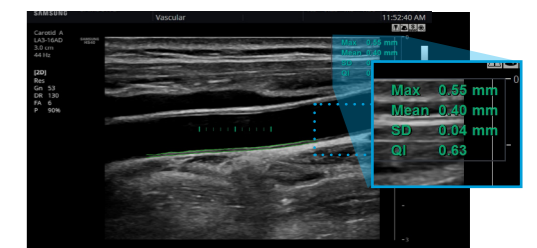


Strain+

## StressEcho<sup>1</sup>

Wall motion scoring and reporting tool to determine heart and blood vessel function

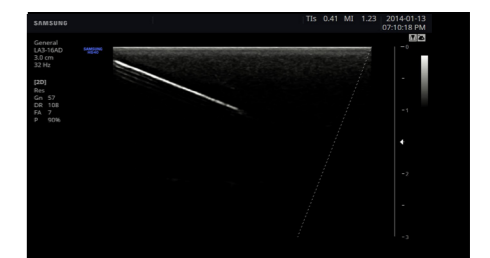
The StressEcho package includes wall motion scoring and reporting. It includes exercise StressEcho, pharmacologic StressEcho, diastolic StressEcho and user-programmable StressEcho.



CCA with AutoIMT+

## AutoIMT+<sup>1</sup>

AutoIMT+ is a screening tool to analyze a patient's potential risk of cardiovascular disease. It allows easy intima-media thickness measurement of both the anterior and posterior wall of the common carotid by the click of a button.



NeedleMate+™ (Phantom)

## NeedleMate+™<sup>1</sup>

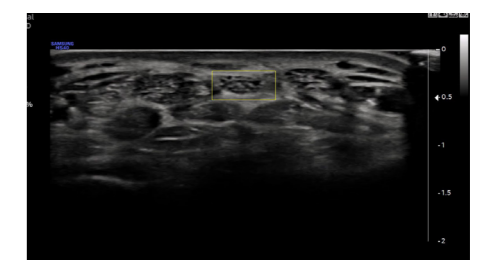
Tool for displaying needle location vividly

With pinpoint precision, NeedleMate+™ delineates needle location when performing interventions such as nerve blocks. Improved accuracy and efficiency in procedure are possible with beam steering added to NeedleMate+™.

## NerveTrack™<sup>3</sup>

Detect the location of nerve area in real-time

NerveTrack is a function that detects and provides information of the location of nerve area in real-time during ultrasound scanning.



NerveTrack™



# User-friendly design

HS40's ground-breaking design was inspired by users' ideas and suggestions during development. Every detail, such as the fully articulating monitor arm, the operating panel which can be easily adjusted to different heights, and additional storage space, has been created to make the work environment more comfortable. And it is this focus on the user that has led to the product winning a prestigious 2017 iF Design Award.



## Solid State Drive (SSD)

The HS40 uses advanced solid state drives. These stable and dependable drives allow faster boot-up, better frame rates, and fast processing speeds.



## BatteryAssist™<sup>1</sup>

BatteryAssist™ provides the system with battery power. It enables users to perform scans and transport the ultrasound system to other locations in environments where AC power may not be available temporarily.

## Articulating monitor arm

With a wide range of motion, the fully articulating monitor arm adapts to your changing needs.



## Height-adjustable operating panel

Adjust the operating panel to your preferred height without straining, thanks to the smooth upward and downward motion of the gas lift.



## Endocavity transducer holder<sup>1</sup>

It provides EC transducer holder for stable mounting of the endocavity transducer when performing gynecological scanning.



## Gel warmer<sup>1</sup>

Two-level adjustable gel warmer maintains ultrasound gel at a comfortable temperature.



## Side storage<sup>1</sup>

The side storage is ideal for storing a tablet, patient charts, or other items that you need to keep close at hand.



## Rear tray<sup>1</sup>

HS40's rear tray provides extra storage space for the endocavity transducer and other items.



## Samsung Healthcare Cybersecurity

To address this emerging need for cybersecurity, Samsung provides a solution to support our customers by offering the tools to protect against cyberthreats that may compromise invaluable patient data and ultimately degrade the quality of care.



Intrusion Prevention



Access Control



Data Protection