

# LG Digital X-ray Detectors

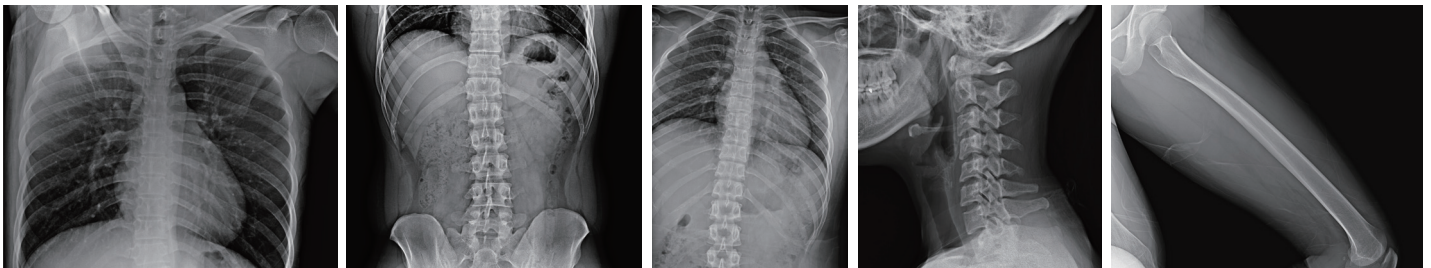


17HK700G-WP  
17HK701G-WP | 17HK701G-WP

## Superior Image Quality for Diagnostic Confidence

Highly Sensitive Csi AED Detector with 16bit AD Conversion (Data Input & Output)

\*Auto Exposure Detection



## Light yet Durable

IP41: Water Resistance & Dustproof



**Solids Level 4**  
Protected against objects of size 1mm or larger

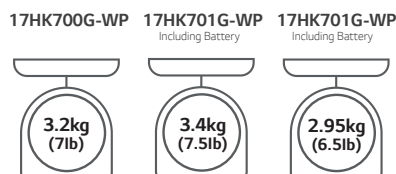


**Liquids Level 1**  
Protected against dripping liquids, such as blood and bodily fluids

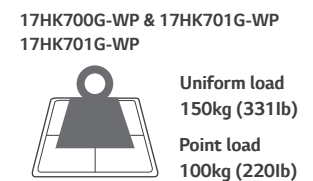
Magnesium & Carbon-fiber Body

With a super strong body that combines carbon-fiber with magnesium, The LG DXD is not only lightweight, but also exceptionally strong.

### Product Weight



### Maximum Load Weight



## Acquisition Workstation Software(AWS) for LG DXD

Multi-layer Image Processing (MLP)

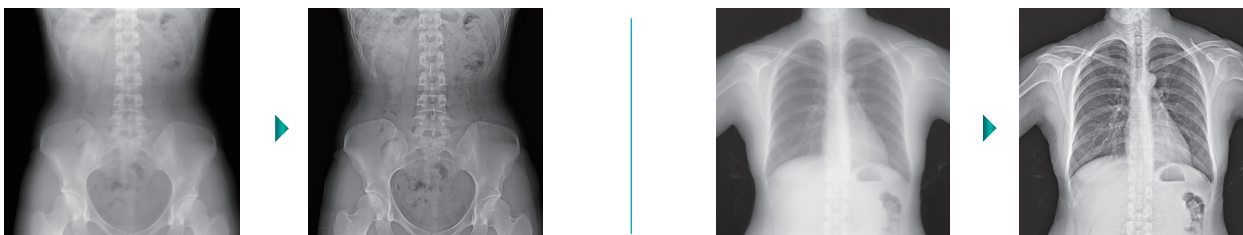
Multi-layer image processing embedded in AWS provides well-balanced visualization at each frequency level. Its contrast enhancement processing functions such as detail contrast, sharpen and de-noise improve tissue visibility within an image.

Conventional

MLP

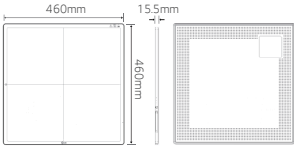
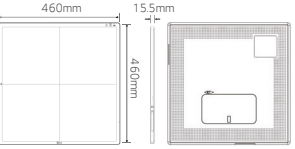
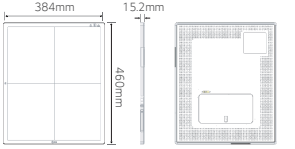
Conventional

MLP



# Specification

## Digital X-ray Detector

Model Name		17HK700G-WP (Wired)	17HK701G-WP (Wired / Wireless)	14HK701G-WP (Wired / Wireless)
External Dimensions / Weight		18.1" x 18.1" x 0.6" 460mm x 460mm x 15.5mm 3.2kg, 7lb 	18.1" x 18.1" x 0.6" 460mm x 460mm x 15.5mm 3.4kg, 7.5lb (lcl. Battery) 	15.1" x 18.1" x 0.6" 384mm x 460mm x 15.2mm 2.95kg, 6.5lb (lcl. Battery) 
Intended Use		General Radiography		
TFT Type		A-si		
Scintillator		CsI		
Pixel Size		140μm		
Image Area	X-ray Sensitive Pixel	3072 x 3072 pixels	3072 x 3072 pixels	2500 x 3052 pixels
	X-ray Sensitive Area	16.9" x 16.9" 430.08 x 430.08 mm	16.9" x 16.9" 430.08 x 430.08 mm	13.8" x 16.8" 350 x 427.28 mm
MTF	MTF @ 0.5lp/mm	(Typ.) 89%		
DQE	DQE @ 0.1lp/mm	(Typ.) 72%		
A/D Conversion		16bit		
Data Output		16bit		
Communication	Type	Wired	Wired / Wireless	Wired / Wireless
	Wireless	-	IEEE802.11a/b/g/n/ac, 2.4GHz / 5GHz	IEEE802.11a/b/g/n/ac, 2.4GHz / 5GHz
	AED (Auto Exposure Detection)	Support		
Cycle Time		8sec.	8sec (Wired) / 11sec (Wireless)	8sec (Wired) / 11sec (Wireless)
Full Image		2 sec (Typ.)	Wired: 2 sec / Wireless: 2.5 sec (Typ)	Wired: 2 sec / Wireless: 2.5 sec (Typ)
Durability	Maximum Load Weight	Full (Uniform Load) : 300 kg, 661 lb Local (Point Load) : 100kg, 220lb		
	Resistance Rating	IP53		
	Sensor Protection Plate	Carbon Fiber Plate		
Battery	Operating Time	-	(Typ.) 240 shots / 6.0hrs. (Condition : Interval Time 90sec.)	(Typ.) 240 shots / 6.0hrs. (Condition : Interval Time 90sec.)
	Duration in Standby Status	-	(Typ.) 13hrs.	(Typ.) 13hrs.
	Charging Time	-	3hrs.	3hrs.

## Acquisition Workstation Software

Installation Requirement	OS	Microsoft Windows 7, 8.1, 10 (64 bit)
	DB	MariaDB
	Processor Options	Intel CPU Desktop sixth gen i7 or above
	RAM	8GB
	HDD	512GB